

Designated procedures Trolley

in the Acute Medical Unit and Ambulatory Care to increase the availability of the equipment for procedures, reduce delays and improve patient care.

A. Chitnis, J. Chana

Acute Medicine Department, Stoke Mandeville Hospital Buckinghamshire NHS Trust

Introduction:



Several procedures are carried out on the medical wards, particularly by the acute medical team



Performing these procedures promptly can facilitate early discharges without specialty involvement.



Clinicians often struggle to find everything they need and waste time

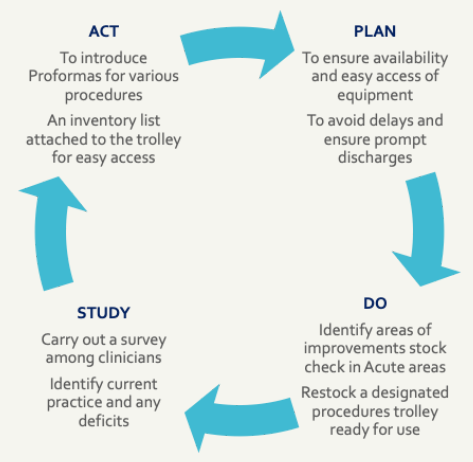


Rotating on-call team performs these procedures, lack familiarity with regards to acquiring the equipment



Results in significant delays in diagnosis and eventually discharges

PDSA:



Limitations

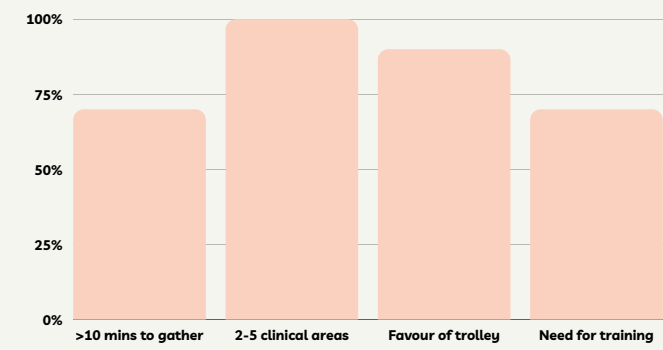
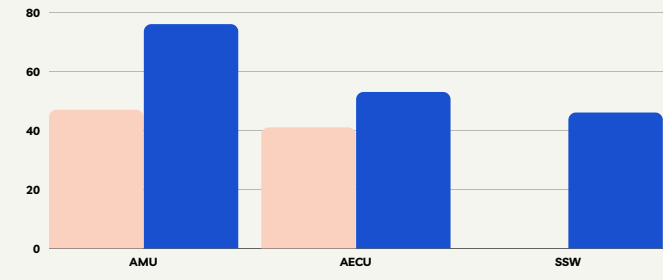
Difficulty to quantify or measure the delays with discharges due to:

- Multi-factorial causes
- Rapid efflux of patients from acute medical ward to Specialty wards

Aims:

- To understand logistical difficulties causing delays in performing procedures in Acute Medical Ward
- To identify areas with scope of improvement
- To ensure availability of all necessary equipment at one place
- To ensure prompt discharges and adequate use of Ambulatory care facilities
- To ensure adequate training of clinicians to increase confidence

Results:



Methods:

- Assess the availability, understand and evaluate the shortage if any
- Devise an Inventory List of equipment commonly needed for procedures
- Comparing the equipment to the list devised
- Survey clinicians involved with procedures

Checklist and Proforma:

CHECKLIST FOR PROCEDURES TROLLEY

- 1) Sterile Gloves
 - a. Size 6
 - b. Size 5.5
 - c. Size 7
 - d. Size 7.5
 - e. Size 8
- 2) Sterile Goggles
- 3) LP Proforma
- 4) Consent Form
- 5) Standard Spinal Set (ref 199 30) / Universal Set (ref 199 20) [Spinal Set includes LP Needle with umbilical set]
- 6) 2% Chlorhexidine Chlorprop
- 7) LP Manometer [Clearly check the manometer is compatible with the LP Needle being used]
- 8) LP Spinal needles
 - a. Black Omega's Needle (22 gauge)
 - b. Yellow Omega's Needle (20 gauge)
 - c. Long Spinal Needle
- 9) Syringes
 - a. 10mls
 - b. 20mls
 - c. Orange
 - d. Blue
 - e. Green
 - f. Red (drawing needed)
- 10) Spinal Blocks
- 11) Sterilisation Set
- 12) Gauze/Wound Swabs
- 13) Sterile Bottles
- 14) Small volume bottles
- 15) Sterilising
- 16) Small volume dressing
- 17) Gauze packs

Please note: Ligasure is not a part of the Trolley and needs to be acquired from the Staff Nurse.

Clearly mark _____ if you are missing out any of the above equipment.

LUMBAR PUNCTURE PROFORMA

1. Indication
 - CLMNI performed YES NO
 - CLMNI Reason: _____
 - NO other specific reason: _____
2. Patient consent - 50
 - YES NO
 - NR 5.1 NR 5.2
3. Consent gained
 - Over patient leave capacity: YES NO
4. Patient position
 - Prone position: Lateral Sitting
 - Assisted: YES NO
 - Upright: YES NO
 - Type of table: _____
 - Quadrant: _____
 - Number of attempts: _____
 - Completion: _____
 - Spinal Needle used: _____
5. CSF characteristics
 - Open pressure: _____
 - CSF sample (labelled in order of collection 1, 2, 3, 4)
 - a. Microbiology in P and P container: 20 drops (20)
 - b. Biochemistry in P container: 10 drops (10)
 - c. CSF glucose - 80% in separate tube: 10 drops (10)
 - d. Autochemistry: 20 drops (20)
 - e. Cytology: 40 drops (20) - if required
 - f. Immunology: Arsenite acid: 4 drops (20)
 - g. Immunology: Digoxigenin beads: 50 drops (25)

Please ensure blood sample used on the same tray of CSF collection for regional bands. Please ensure patient glucose is used at the same time.

Performed by: _____ Date: _____ Dept: _____
Supervised by: _____ Date: _____ Location: _____

Conclusion

- A designated procedures trolley is instrumental in
 - expediting the procedures
 - ensuring timely care
 - avoid delay in discharges
- Prevented unnecessary movement within Wards which is paramount in terms of infection control strategy
- Helped identify appropriate equipment which can be used for wide range of procedures and significantly cut down on expenditure